



STONE
INTERNATIONAL



KENTE OCCASIONAL CHAIR

Elegant and stately. Our angled back cuts through to the heart of this design. Broad seat and back give way to firm support. Clean, satin brass finish with its modern shaped frame. Beautiful from every angle. Plain Seat / Fixed. Polished Steel or Satin Brass frame. Available in Leather and Fabric

Dimensions: 29" x 33" x 37" H - 74 x 84 x 94 H cm

Seat Height: 17" - 43 cm

Seat Depth: 21" - 54 cm

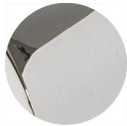
ITEMS

SKU	DESCRIPTION	DIMENSIONS (cm)	DIMENSIONS (in)	NOTES
0400	"KENTE" occasional chair	74 x 84 x 94	29 x 33 x 37	



STONE
INTERNATIONAL

FINISHES



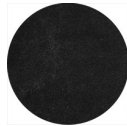
Metal Finishes
Polished Steel
(PS)



Metal Finishes
Brushed Brass
(SB)



Leathers
Old Brown
(130)



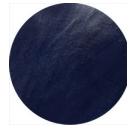
Leathers
Old Black
(131)



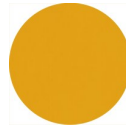
Leathers
Cream
(133)



Leathers
Graphite Grey
(313)



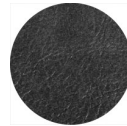
Leathers
Blue
(314)



Leathers
Saffron Yellow
(315)



Leathers
Whiskey
(316)



Leathers
Black
(333)



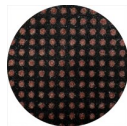
Leathers
Embossed
White Alligator
(402)



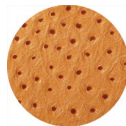
Leathers
Embossed
Black Alligator
(403)



Leathers
Embossed
Grey Alligator
(404)



Leathers
Pois
(450)



Leathers
Embossed
Ostrich
(459)



Leathers
Pearl White
(469)



Leathers
Embossed
Crocodile Tan
(472)



Leathers
Embossed
Crocodile
Burgundy
(473)



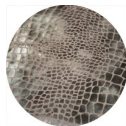
Leathers
Embossed
Crocodile Grey
(474)



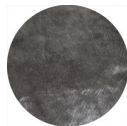
Leathers
Embossed
Crocodile Black
(475)



Leathers
Embossed
Crocodile
Champagne
(476)



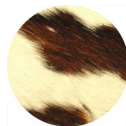
Leathers
Silver Crocco
(492)



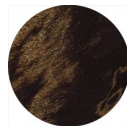
Leathers
Pony Black
(500)



Leathers
Pony Beige
(502)



Leathers
Pony Tri-colored
(503)



Leathers
Pony Brown
(510)



Leathers
Pony Bay
(513)